

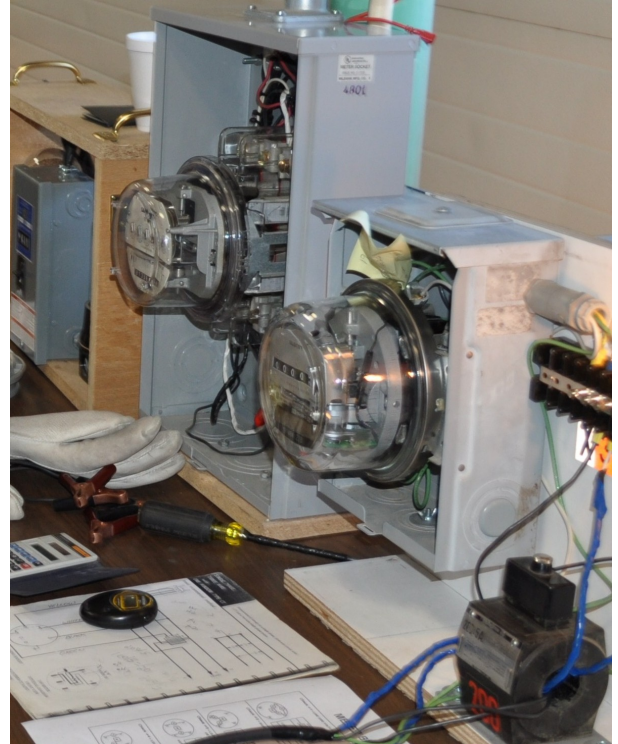
2012 Meter School and Basic Metering Pre-Conference

February 14-17, 2012
MMUA Training Center
Marshall, Minnesota

Minnesota Municipal Utilities Association and our partners, Minnesota Rural Electric Association and American Public Power Association, are pleased to offer the 2012 Meter School and Basic Metering Pre-Conference.

Returning this year is the Metering Product Show! The show is open to all attending the Meter Workshop.

Take a moment and carefully read through this brochure to make your reservations to attend!



About the Instructors

Larry Chapman of Chapman Metering will be on hand with his staff to partner with the instruction. Larry is a highly respected metering professional, working in the metering business his entire career! Larry has been instructing at the MMUA Meter School for a number of years.

Greg May of Two Meters/Two Sockets will also be on hand to partner with the instruction. Greg is also a highly respected metering professional and has worked in the metering industry his entire career! Greg as well has been an instructor at the MMUA Meter School for many years.

Minnesota Municipal Utilities Association

3025 Harbor Lane North, Suite 400
Plymouth, MN 55447-5142

Phone: 763-551-1230
Fax: 763-551-0459
Web: www.mmua.org
E-mail: rkelly@mmua.org

Training Center Mission: *To promote, perform, and enhance safe work environments in our municipal utilities, with the willingness to learn and pass on the passion of the craft.*

2012 Meter School & Pre-Conference

MMUA Registration Information

Registration Fee

Pre-Conference on Basic Metering

\$115 per student (members), \$130 per student (non-members) on or before February 1, 2012. All fees increase \$15 on or after February 2.

Meter School

\$440 per student (members), \$490 per student (non-members) on or before February 1, 2012. \$115 for every 3rd student from same city, utility or company. Must be member to qualify for discount. All fees increase \$50 on or after February 2.

Fee includes: workshop tuition, materials, Wednesday lunch (pre-conference only), Thursday and Friday lunch, refreshment breaks and a certificate of attendance.

Refunds

A refund will be given on advance registrations if the MMUA office is notified by 4:30 pm on February 1. A cancellation fee of \$25 will be charged.

Marshall Hotel Information

AmericInn Motel & Suites

1406 Lyon Street
507-537-9424
Ask for MMUA's reduced rate.

RAMADA (formerly Best Western)

Junction of Hwy. 19 & 23
507-532-3221
Ask for MMUA's reduced rate.

Traveler's Lodge

1425 East College Drive
507-532-5721

Comfort Inn

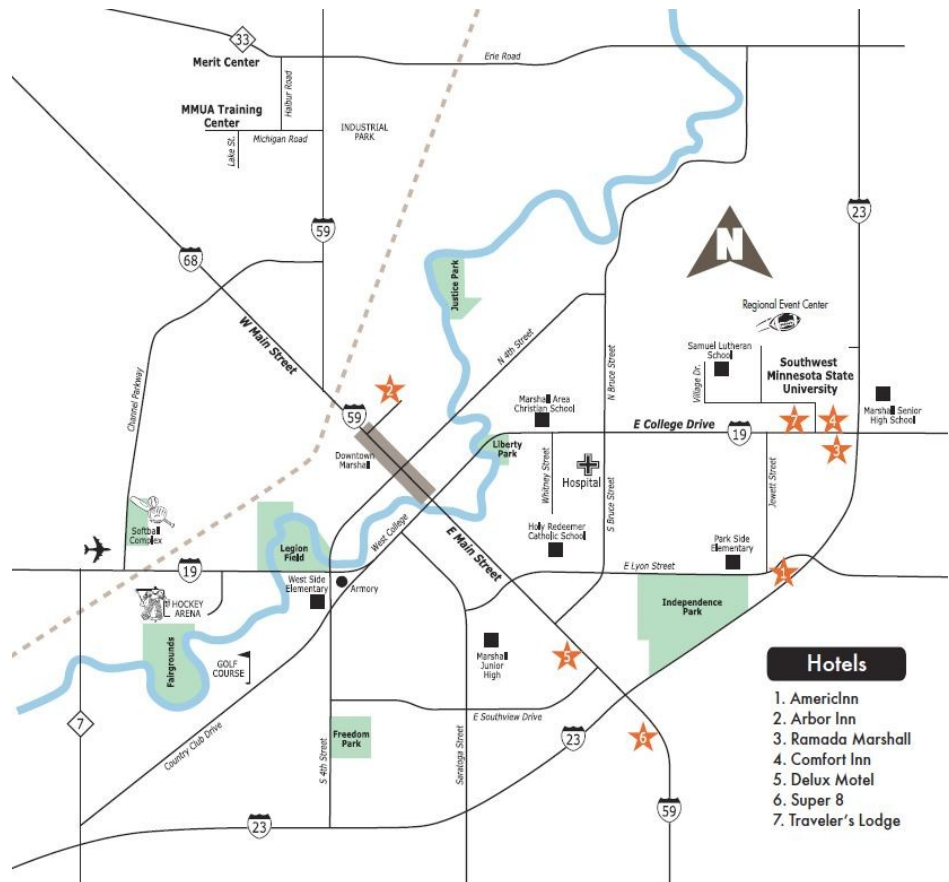
1511 East College Drive
507-532-3070

Super 8

1106 East Main Street
507-537-1461

Deluxe Motel

516 East Main Street
507-532-4441



Questions

If you have questions regarding the program and its content, please contact Kevin Thompson at MMUA. His phone number is 507-532-7522 or email ktompson@mmua.org.

If you have questions or problems with your registration or reservations, please contact Rita Kelly at MMUA. Her phone number is 763-746-0707 or email rkelly@mmua.org.

2012 Meter School & Pre-Conference

4421

Pre-Conference — February 14-15, 2012
Meter School — February 15-17, 2012

MMUA Training Center
1004 Michigan Road
Marshall, MN 56258



Minnesota Municipal Utilities Association
3025 Harbor Lane North, Suite 400
Plymouth, MN 55447
Phone 763-551-1230
Fax 763-551-0459
www.mmua.org

Attendee Information

Name (1): _____

Email (1): _____

Name (2): _____

Email (2): _____

Name (3): _____

Email (3): _____

Class Selection (select one)

_____ Pre-Conference on Basic Metering only

_____ Meter Workshop only

_____ BOTH Pre-Conference and Meter Workshop

Utility: _____

Address: _____

City: _____

State/Zip: _____

Main Contact: _____

Email: _____

Phone: _____

Registration Fees

Members:

Pre-Conference

\$115 on or before **February 1, 2012**

\$130 on or after **February 2, 2012**

Meter Workshop

\$440 on or before **February 1, 2012**

\$490 on or after **February 2, 2012**

\$115 for every third student from same utility/
company on or before **February 1, 2012**

\$165 for every third student from same utility/
company on or after **February 2, 2012**

Non-Members:

Pre-Conference

\$130 on or before **February 1, 2012**

\$145 on or after **February 2, 2012**

Meter Workshop

\$490 on or before **February 1, 2012**

\$540 on or after **February 2, 2012**

Total Due: \$ _____

Payment

Check Payable to MMUA

Bill Utility/Company

Purchase order _____

REFUND: A full refund (minus \$25 processing fee) will be given on advance registrations if the MMUA office is notified by 4:30 pm on **February 1, 2012**.

PHOTOGRAPHS: By registering for this conference, I authorize Minnesota Municipal Utilities Association (MMUA) to photograph me at this event and use such photographs in MMUA marketing pieces (both electronic and print). I understand that I will not be paid for giving this consent.

QUESTIONS: Please contact Rita Kelly by email rkelly@mmua.org or phone 763-746-0707.

Register by e-mail: rkelly@mmua.org

Register by mail:

Minnesota Municipal Utilities Association
3025 Harbor Lane North, Suite 400
Plymouth, MN 55447

Register by fax: 763-551-0459

Register by phone: 763-746-0707