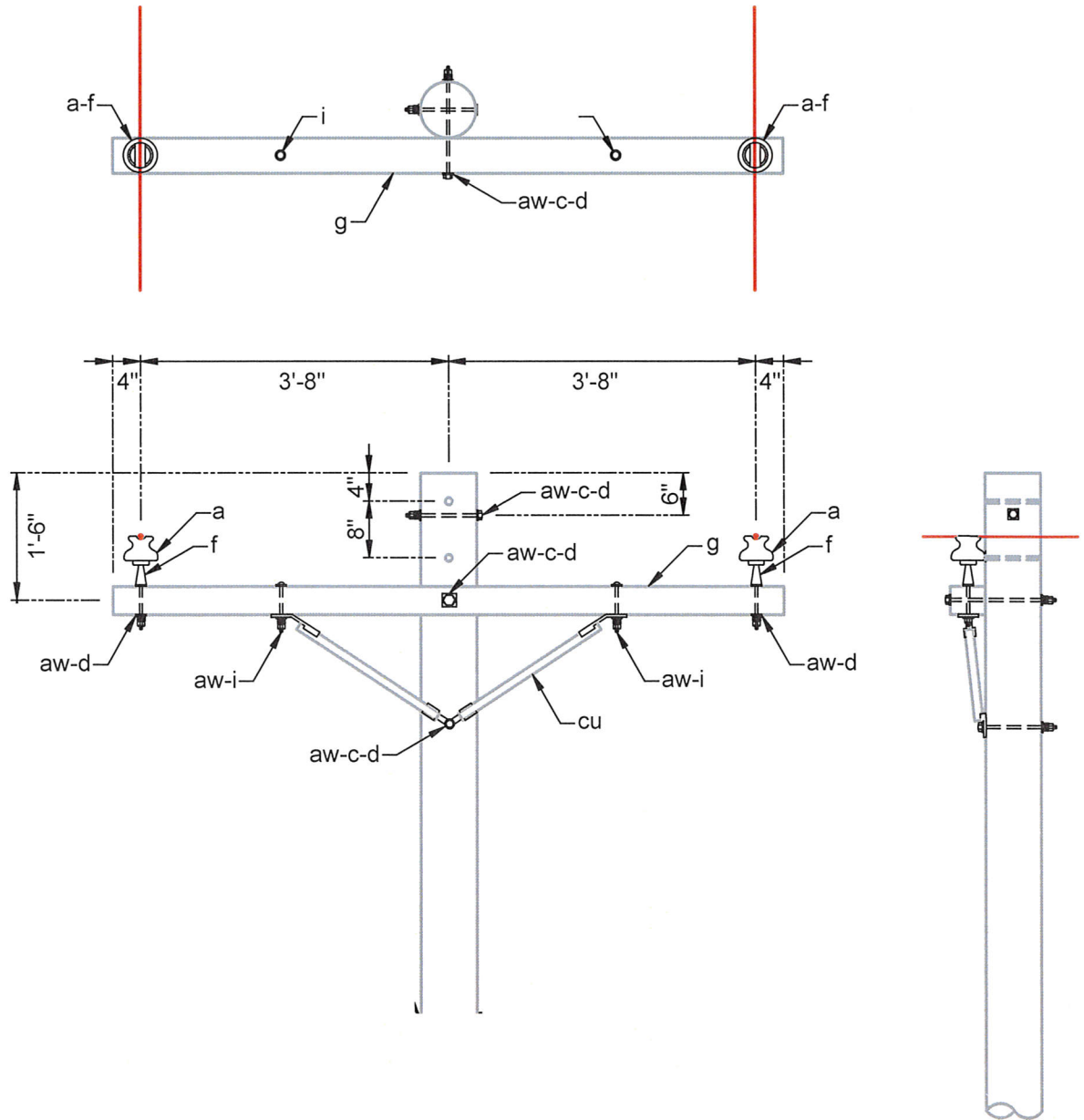


PLAN



| ITEM | No. | MATERIAL | ITEM | No. | MATERIAL |
|------|-----|---------------------------------------|------|-----|---------------------------|
| a | 2 | Insulator, pin type | i | 2 | Bolt, carriage, 1/2" x 6" |
| aw | 7 | Spring washer | | | |
| c | 3 | Bolt, machine, 5/8" x required length | | | |
| cm | 1 | Spool insulator | | | |
| cu | 2 | Brace, wood, 36", medium duty | | | |
| d | 7 | Washer, square 2-1/4" | | | |
| f | 2 | Pin, crossman, steel | | | |
| g | 1 | Crossarm | | | |

DESIGN LIMITS

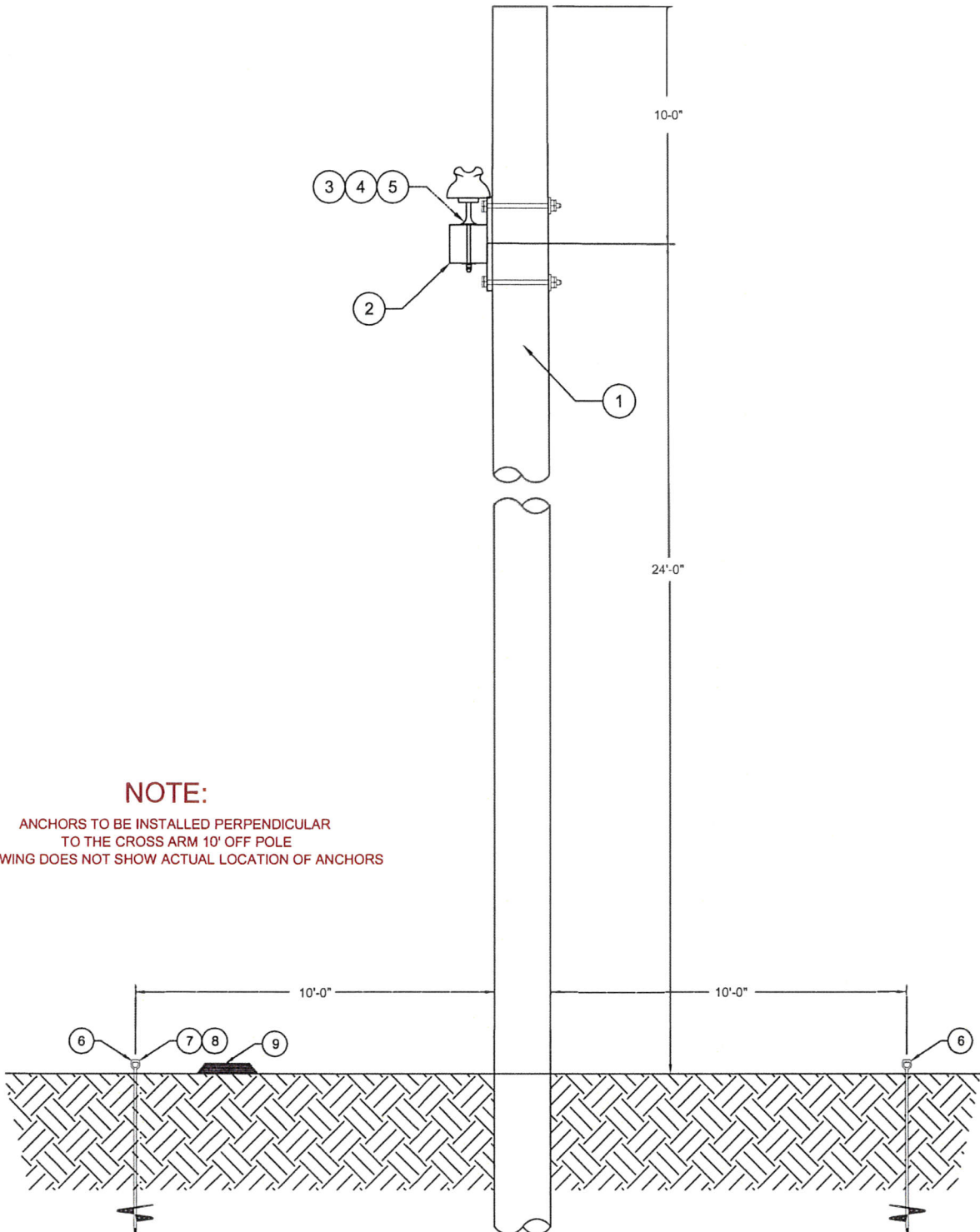
Max. transverse load: 500 lbs. per conductor.

Max. line angle within load limits: 5°

**12.5/7.2 kV PRIMARY, 2-PHASE
CROSSARM CONSTRUCTION
SINGLE PRIMARY SUPPORT**



Hurt Man Rescue



NOTE:

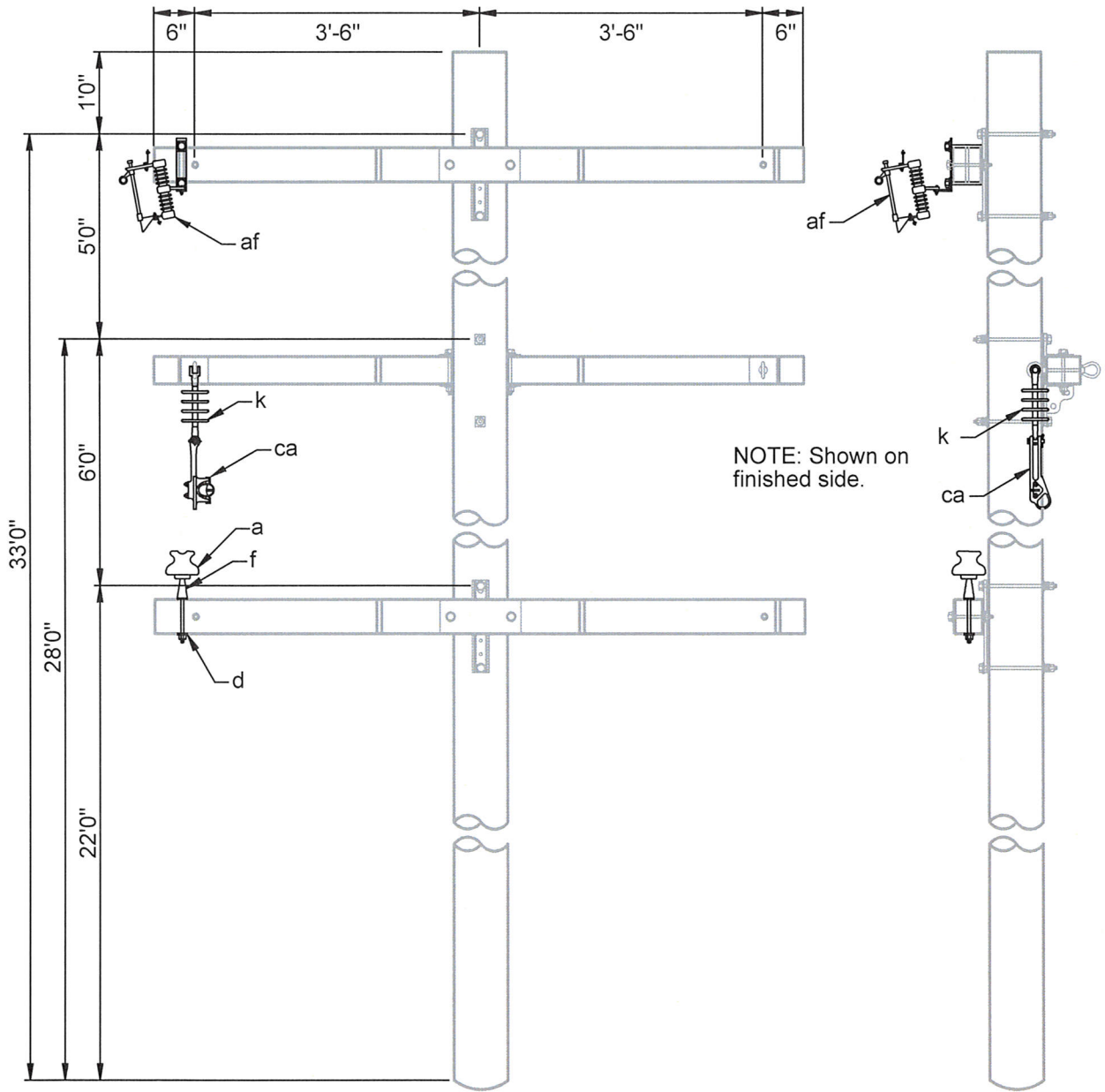
ANCHORS TO BE INSTALLED PERPENDICULAR
TO THE CROSS ARM 10' OFF POLE
DRAWING DOES NOT SHOW ACTUAL LOCATION OF ANCHORS

| # | MATERIAL DESCRIPTION | QTY | VENDOR DESCRIPTION | # | MATERIAL DESCRIPTION | QTY | VENDOR DESCRIPTION |
|---|-------------------------------------|-----|-----------------------------------|---|------------------------------------|-----|---------------------------------|
| 1 | 40' POLE | 1 | | 6 | ANCHORS 6" | 2 | HUBBELL 10146 |
| 2 | 8' FIBERGLASS ARM | 1 | CROSSARM, PUPI (TANGENT ASSEMBLY) | 7 | GUY WIRE 3/8" X 20' (PRE-ATTACHED) | 1 | NATIONAL STRAND 38GFEX7855C0500 |
| 3 | MACHINE BOLT 5/8" X REQUIRED LENGTH | 2 | | 8 | 3/8" GUY PREFORM (PRE-ATTACHED) | 1 | PLP GDE1107 |
| 4 | 15 kV POLY INSULATOR | 2 | PLP IP-15-C | 9 | 3/8" X 70' NYLON BRAIDED ROPE | 1 | |
| 5 | CROSSARM PINS | 2 | HUBBELL 883P | | | | |

| | | | |
|---------|----|-------|--|
| 3 | | | |
| 2 | | | |
| 1 | | | |
| 0 | | | |
| REVISED | BY | APPR. | |

Rope Toss





| ITEM | No. | BUILD MATERIAL | ITEM | No. | COURSE MATERIAL |
|------|-----|--|------|-----|---------------------------|
| c | 6 | Bolt, machine, 5/8" x required length | a | 1 | Insulator, pin type |
| d | 6 | Washer, square 2-1/4" | af | 1 | Cutout, fuse |
| | | | ca | 1 | Deadend assembly, primary |
| g | 3 | Crossarm, PUPI (Tangent Assembly, Series 2000) | d | 1 | Washer, square 2-1/4" |
| | | | f | 1 | Pin, crossman, steel |
| Note | 1 | 40' Pole | k | 1 | Insulator, suspension |
| | | | | | |
| | | | | | |

Obstacle Course



Obstacle Course